

FIRST NOTE
-starting pitch-



1st STRING
OPEN

TABLATURE
EACH STRING IS A LINE



**DOWN
STRUM**



STRUM DOWN
to the
GROUND

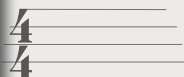


Eighth Note
Strum Bar
1/2 A BEAT

**UP
STRUM**



STRUM UP
to the
SKY



Four Beats
per
MEASURE

CHORDS

These Boots are Made for Walkin'

Nancy Sinatra

Tablature for the song "These Boots are Made for Walkin'" by Nancy Sinatra. The notation includes fret numbers, slurs, and strumming patterns (downward and upward) corresponding to the lyrics.

Lyrics: You keep saying you've got some- thin' for me. some- thin' you call love, but con- fess. You've been messin' where you shouldn't been mess- in, and now someone else is gettin' all your best. These boots are made for walk- in' that's just what they'll do. One of these days these boots are gon- na walk all ov- er you.

Alternate Strum pattern for E Chords:

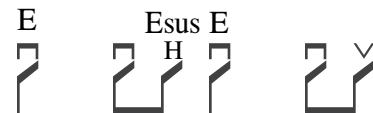


Diagram showing the fingerings for the chords E, A, G, Em, and Esus. The fretboard is shown with circles indicating finger placement (1, 2, 3, 4).

Chords: E, A, G, Em, Esus